

**EH Series** Magnetic Door Holders

Designed to hold doors open and release the door by remote switch or fire life safety command center activation.



Voltage: 12/24VAC/DC  
Finish: Chrome Powder Coat

Part #	Mount	Price
SXEH101224A	Flush	\$153.00
SXEH201224A	Semi-Flush	\$118.00
SXEH301224A	Surface	\$171.00

**Power Transfer Loop**

Provide a means of running wires from the frame to doors equipped with electric locks and exit devices.



Power Transfer Loop with Black End Caps  
**SXPT-2U**  
\$24.00  
18" Long, 1/4" I.D.

**Electric Power Transfer Hinges**

Provide a concealed and vandal resistant method for running wires from the frame to doors equipped with electric locks and exit devices.



626 Dull Chrome  
4-1/2" x 4-1/2"

Part #	Description	Price
SXPTH-4Q	1 Amp @ 12/24V per pair, (4x) 26 AWG	\$169.00
SXPTH-10Q	1 Amp @ 12/24V per pair, (10x) 28 AWG	\$223.00
SXPTH-10QDPS	Concealed Door Position Switch SPDT, 250mA @ 30VDC	\$286.00
SXPTH-2+4Q	1-pair 16 Amp Inrush, 4 Amp Continuous; 2-Pair 1 Amp @ 12/24V, (2x) 18 AWG + (4x) 28 AWG	\$201.00

**Electric Power Transfer Devices**

Provides a concealed and secure means of transferring electric lock and exit device power and signal wires from the frame to the door.

**SXPTM-2AL** \$422.00

Two conductor power transfer device, aluminum powder coat



**SXPTM-10AL** \$422.00

Ten conductor power transfer device, aluminum powder coat

**Universal Controller**

For 2 doors. field select td, LR, TD/LF, mantrap a, b, c interlock. two fused spdt outputs, 5 amp @ 30vdc. two SPDT outputs, 5 amp @ 30vdc. two inputs per station, four auxiliary inputs.



**SXUR2-4** \$257.00

**Desk Switch**

Mounted on the underside of a desk, these switch assemblies enable the remote control of doors equipped with electric locks and access controls.



**SX15-2** \$89.00

**Egress Sensor**

Specifically designed for request-to-exit applications. It has an adjustable 1-60 sec time delay. The coverage field is internally pointable. When angled 14° down, coverage may be 5 x 6 ft at 7 ft high to 10 x 12 ft at 15 feet high.



**SXMD-31DOW** White \$262.00  
**SXMD-31DB** Black

**Quiet Duo™ LR100** Electric Latch Retraction Kits

700mA Dual Latch Retraction/Dogging Kit

For use with 3hr fire rated and non-fire rated mechanical exit devices.



Part #	Exit Device	Price
SXLR100ARK*	Adams Rite	\$683.00
SXLR100AWK	Arrow	
SXLR100CRK	Corbin-Russwin	
SXLR100DAK	Dorma	
SXLR100DMK	Dor-O-Matic	
SXLR100FAK	Falcon	
SXLR100FRK	Falcons	
SXLR100MDK	Marks	
SXLR100PDK	PHI	
SXLR100SGK	Sargent	
SXLR100VDK	Von Duprin	\$738.00
SXLR100VDK-EM	Von Duprin	
SXLR100VDK-22	Von Duprin	
SXLR100YDK	Yale	\$683.00

Ask customer service to confirm the exact model that each kit will work for.

**Exit Switches**

2" Illuminated Exit Switches



420 Series

<b>SX423MU</b> \$161.00	<b>SX422U-630</b> \$81.00
Integrated Fixed 30 Sec. Timer	Momentary SPDT
<b>SX423U</b> \$158.00	<b>SX474U</b> \$87.00
Integrated Electronic Timer	2-SPDT Touchless Exit Switch

**Emergency Door Release**

**Blue Break Glass Station**  
2-SPDT 10 Amp Contacts With Built-In Local Alarm (12/24V)

**SX491** \$210.00



**Exit Bars**

Designed to release electromagnetic door locks for uninhibited egress.



MSB560 Mechanical Egress Bar

Part #	Width	Finish	Price
SXMSB550V	36"	Aluminum	\$248.00
SXMSB550Y	36"	Black	\$248.00
SXMSB5502V*	36"	Aluminum	\$282.00

\*2nd Mech. Switch For Dual-failsafe Redundant Oper.

PSB560 Sure Exit® Egress Bar

SXPSB560V	36"	Aluminum	\$401.00
SXPSB560Y	36"	Black	

**Magnetic Locks**

- Modular design
- Modular upgrade kits
- Field upgradeable without removing from the frame



Part #	Description	Price
SX1511SNAKV	1650 lb Key Switch	\$1,336.00
SX1511SNDKV	1650 lb Key Switch	
SX1511-628	1650 lb Aluminum	\$529.00
SX1511-X	1650 lb Dark Bronze	\$623.00
SX1571-V-628	1200 lb Aluminum	\$485.00
SX1571-X	1200 lb Dark Bronze	\$579.00
SX1581-V	650 lb Aluminum	\$401.00
SX1581-X	650 lb Dark Bronze	\$495.00

Top Jamb Mounting Brackets

<b>SXTJ1V</b>	Kit for 1200lb and 1650lb Locks	\$141.00
<b>SXTJ81V</b>	Kit for 650lb Locks	\$141.00

**Narrow Line Magnetic Lock**

1200lbs Holding Force w/Dual 12/24VDC Input

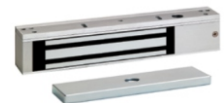
**SX350V** \$430.00



**Excel™ Series Magnetic Lock**

Traffic Control, Air-Locks & Communicating Bathrooms, 600 lb/272 kg Holding Force

**SXE600-628**  
\$247.00



**Electra Pro™ Locks**

For the access control of openings in commercial, industrial and institutional facilities



E = Eclipse E5 = Eclipse, I-Core Prep  
G = Galaxy G5 = Galaxy, I-Core Prep

Part #	Description	Price
<b>SXZ7250-EQ-628</b>	Failsafe	\$480.00
<b>SXZ7250-E5Q</b>	Failsafe	\$569.00
<b>SXZ7250-G5Q</b>	Failsafe	\$569.00
<b>SXZ7252-EQ-628</b>	Failsecure	\$569.00
<b>SXZ7252-E5Q</b>	Failsecure	\$569.00
<b>SXZ7252-G5Q</b>	Failsecure	\$569.00